

Sapphire SQL Manufacturing, Warehousing & eCommerce solutions



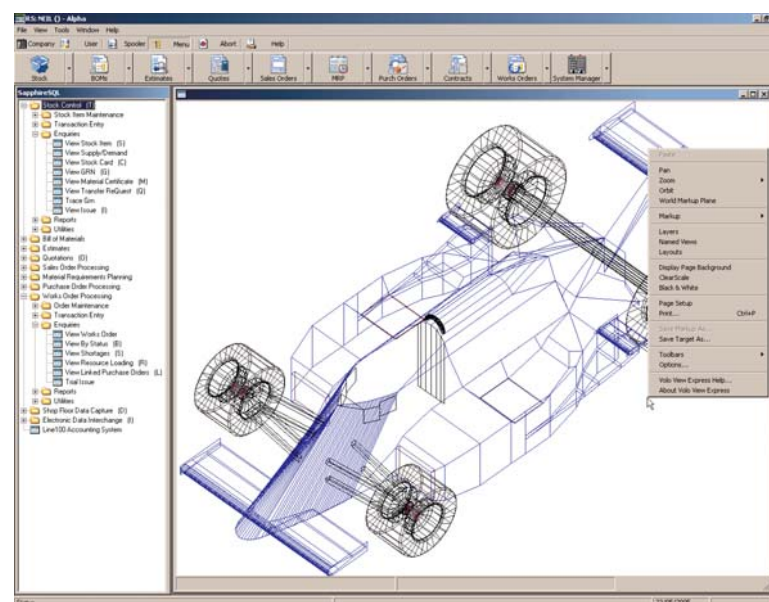
Software & Implementation overview

Sapphire SQL is a completely integrated Manufacturing, Warehousing and eCommerce solution for Sage Line 50, Line 100 and MMS. This ERP product provides extensive facilities for Bill of Materials, Works Order Processing, Engineering Control, MRP, CRP, Stock Control, Sales Order Processing, Purchase Order Processing and Warehouse Management.

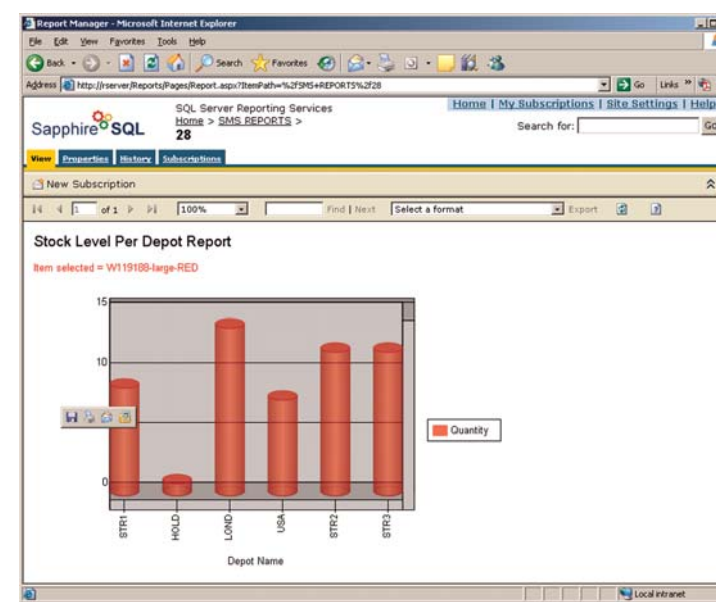
Sapphire Manufacturing have been developing Sapphire SQL for over nine years. The software's exposure to hundreds of different business types (detailed on the right) has resulted in a highly sophisticated product which can be easily tailored to suit the particular business needs of each new customer. This is made possible by an extensive set of parameters which allows the software to be tailored to model the operations of each company.

With the ©Microsoft SQL database engine at its core, Sapphire SQL users are able to take advantage of leading edge technologies to give real business benefits. For example, ©Microsoft SQL Server Reporting Services can be used to create powerful reports, which can be delivered over a customer's own intranet facilities, to supplement the already extensive suite of reports provided within the standard software.

Sapphire Manufacturing are able to provide the complete implementation solution, from initial assessment of the suitability of Sapphire SQL for your business needs, through hardware procurement and staff training right through to the "go live day". Once live, our consultants provide high quality help desk facilities and on-site services to keep your system running smoothly and efficiently through software upgrades, legislative changes and your own business developments.



Sapphire SQL's intuitive graphical interface and easy to navigate menu structure



Powerful multi-platform reporting can be handled through ©Microsoft SQL Server Reporting Services

Key Product Features

- ◆ Bill of Materials with unlimited parts, sub-assemblies and manufacturing operations.
- ◆ BOM Cost roll-up facility including detailed enquiry system.
- ◆ Phantom BOM capability.
- ◆ Trial kitting with recursive drill down through multi-level BOMs.
- ◆ Sophisticated rule based Estimating system integrated with Bill of Materials module.
- ◆ Works Order progressing and time-sheet entry for labour and finished goods processing.
- ◆ Make to Order, make to Stock and batched Works Order creation options for full hybrid manufacturing capabilities.
- ◆ Detailed workshop documentation including route control, Works Order printout, tracking slips and kitting list.
- ◆ Resource loading facilities and integration with finite scheduling systems.
- ◆ Multi-depot, multi-bin stock control with end-to-end batch and serial traceability.
- ◆ Inter-depot transfer facility including goods in transit management.
- ◆ Perpetual stock take facility.
- ◆ Advanced Shop Floor Data Capture integration with wireless barcode hand scanners, and keyboard wedge scanners.
- ◆ Integration with Industrial barcode label printers.
- ◆ Advanced customer and price list based pricing on Sales Orders.
- ◆ Full Material Requirements (MRP) and Master Production Scheduling (MPS) facilities.
- ◆ CAD/CAM drawing viewer facility compatible with all major CAD drawing types.

Industry Implementations

Aerospace
 Aerospace component distribution
 Aerospace equipment manufacture
 Vacuum chamber manufacture
 Wiring harness manufacture

Automotive
 Automotive coil spring manufacture
 Car audio equipment supply
 Car paint distribution
 Spare parts distribution
 Vehicle alarm system manufacture

Chemicals
 Cosmetic accessory manufacture
 Cosmetic manufacture
 Detergent manufacture
 Specialist casting manufacture
 Specialist oil distribution
 Specialist pipe fitting manufacture

Clothing
 Clothing manufacture
 Footwear distribution

Consumer Products
 Fastenings distribution
 Lampshade manufacture
 Tableware manufacture
 Toiletary manufacture

Electronics
 Alarm system manufacture
 Cabling installation and manufacture
 Communication equipment manufacture
 Computer network systems supply
 Egg incubator manufacture
 Electronic component distribution
 Electronic component manufacture
 Electronics manufacture
 Home entertainment equipment distribution
 Loudspeaker manufacture
 Magnetic component manufacture
 PC equipment and systems supply
 Scientific equipment manufacture
 Specialist electronic circuit manufacture

Engineering
 Coin machine manufacture
 Cold Stores manufacture
 Furnace manufacture
 Furniture manufacture
 Glass vial manufacture
 Metal cabinet manufacture
 Milking machine manufacture
 Particle accelerator magnet manufacture
 Pub equipment manufacture
 Refrigeration plant manufacture
 Robotic assembly line system supply
 Sand blasting booth manufacture
 Steel distribution
 Tool manufacture
 Waste compactor manufacture
 Wheelbarrow manufacture

Food
 Cake and biscuit distribution
 Cake manufacture
 Food distribution
 Food manufacture
 Pet food manufacture
 Wine distribution

Medical
 Hospital equipment and cabinet manufacture
 Medical equipment manufacture
 Medical products distribution

Paper & Packaging
 Bespoke envelope manufacture
 Canvas product manufacture
 Contract packers
 Container manufacture
 Cardboard box manufacture
 Food Packaging Pattern Makers
 Liquid packaging manufacture
 Paper supply

Plastics
 Injection Molders
 Laminated material manufacture
 Washer/seal manufacture

Retail
 Commercial photo lab
 Mobile phone retail and distribution
 Retail outlet and contract management
 Shop display manufacture

Others
 Bonded material manufacture
 Contracting for drain clearing
 Marketing Company