

CAUTION !! All new procedures and processes should be checked in the 'Test' environment before being applied to the 'Live' business system.

PROJECTED REORDER/MANUFACTURE REPORT – Ver 2
(DETERMINING DEMAND/SUPPLY BALANCE BY STOCK PROFILING)

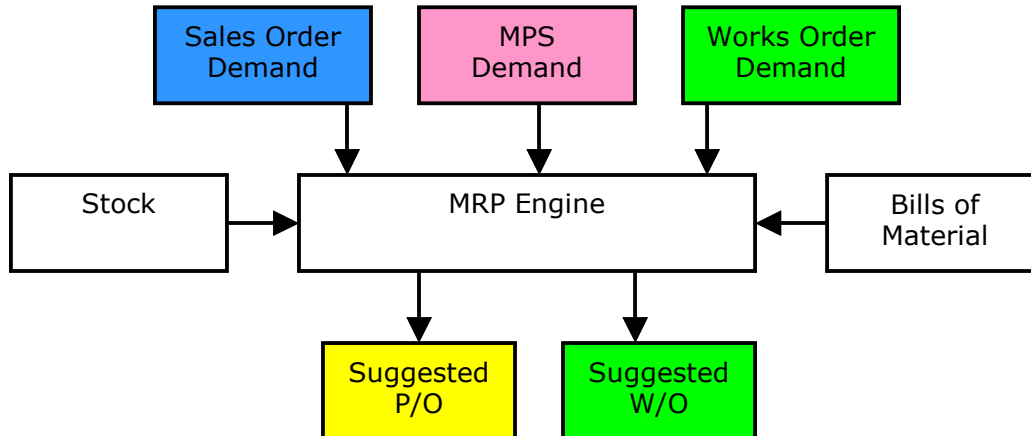
This program is located under *Stock Control, Reports, Projected Reorder/Manufacture Report*. It was revised in V9 after Service Pack 12 and this update is described below.

When the program is run, two reports are generated, the Suggested Purchase Orders and the Suggested Works Orders reports. These are particularly important for users who do not have the MRP module, and manufacturers in a Make-to-Order mode.

The reports operate by reading the transactions against selected items, as would be viewed on the *Stock Control, Enquiries, View Supply Demand* and then combining these on a report.

The following diagrams show the difference between conventional MRP and the Projected Reorder/Manufacture Report.

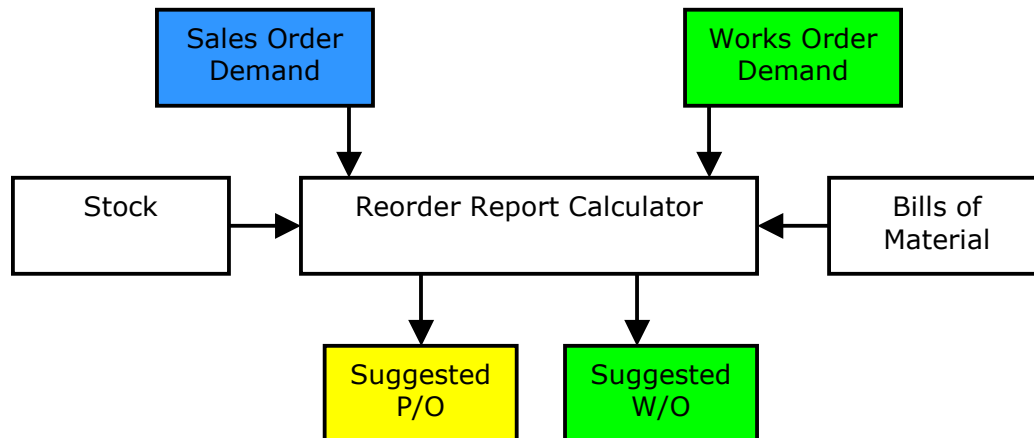
1. MRP



MRP is a single stage process that will explode demand from Sales Orders, MPS and Works Orders to generate a Gross Requirement of parts. Any available stock is then considered, to give a Nett requirement which is further divided into Suggested Works Orders and Suggested Purchase Orders.

There are usually separate 'horizons' for manufactured and purchased items.

2. Stock Profiling



There is no provision to take an MPS demand.

Stock Profiling requires a two-stage process from the entry of a Sales Order to determine the Works Orders and components required.

There is only a single demand horizon. If different horizons are required for manufactured and purchased items then the report must be run again with different values.

Step 1 – raise the Sales Order on the system and run the report. This will show any requirement to manufacture (or purchase) items to meet the parent demand from the sales order.

Step 2 – enter the subsequent Works Orders on the system. Note that Sapphire can automatically raise works orders for lower level assemblies (see Note) from multi level BOM structures at the same time as the parent item. Run the report. This will now show the Purchased items required to meet the order demand.

NOTE !

The ability to raise lower level orders at the same time as the parent item is particularly important in this context. If this option is taken, the result is very similar to MRP, in that all orders for an assembly are considered at the same time.

BlueStone Solutions for Business

Unit A, Tayside Software Centre, Technology Park, Dundee, DD2 1TY

Email: sales@bluestone-solutions.co.uk www.bluestone-solutions.co.uk

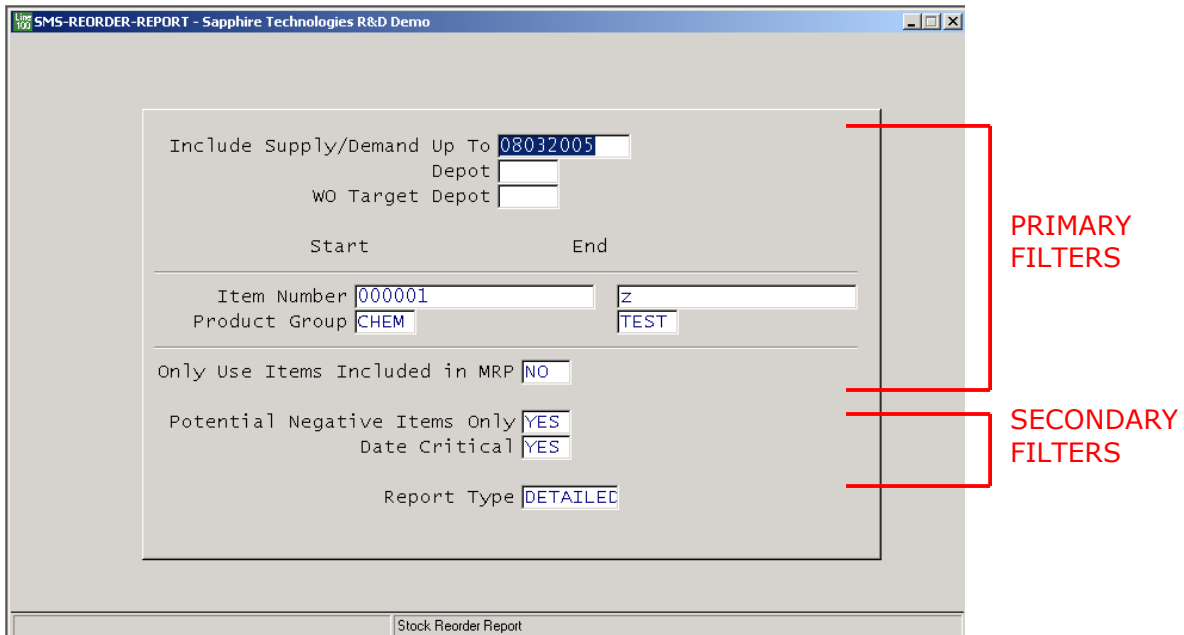
Offices in Leicester & Bristol. For all locations contact (0800) 027 3775

3. Operation

The report operates by calculating supply and demand from the transactions. These are

OP	Open Purchase Order	Supply	
FW	Firm Works Order	Supply	
OW	Open Works Order	Supply	
SO	Sales Order	Demand	
PS	Projected Shortage	Demand	on entered works order
FS	Firm Shortage	Demand	on issued works order

The balance is then compared with the **Reorder Level** from the Stock file.



PRIMARY FILTERS

Include Supply/Demand Up to

The time horizon up to which transactions will be included

Depot

The depot from which the transactions will be included and the report calculated. Leave this blank to include all Depots.

WO Target Depot

In addition to the above depot, Work Orders to be completed in this depot will also be considered. Leave this blank to include all Depots.

Start/End

In line with the SMS policy of including maximum data when defaults are selected, the full range of Items and Product Groups are shown by default.

A range of Items or Product Groups, or a single product group can be selected

Only Use Items Included in MRP

The default is NO. This will include all stock file items and effectively gives a Projected Stock Movements Report for all items in the selected Item Number and Product Group ranges.

BlueStone Solutions for Business

Unit A, Tayside Software Centre, Technology Park, Dundee, DD2 1TY

Email: sales@bluestone-solutions.co.uk www.bluestone-solutions.co.uk

Offices in Leicester & Bristol. For all locations contact (0800) 027 3775

SECONDARY FILTERS

Potential Negative Items Only

The default is YES, and will report all items where the stock level falls below the reorder level up to the time horizon.

Date Critical

The available options are Y and N. The default is Y

If Date Critical = N then the report will only look for balanced supply and demand within the date horizon. If the stock level would have fallen below the Reorder Level for a short period due to a replenishment purchase/works order arriving after a sales order demand, but then becoming 'balanced' by the time horizon, then the item is not included on the report.

If Date Critical = Y then any item becoming potentially negative is included.

Report Type

The default is 'Detailed', and this lists the underlying transactions included in the calculation. The alternative is 'Summary'

BlueStone Solutions for Business

Unit A, Tayside Software Centre, Technology Park, Dundee, DD2 1TY

Email: sales@bluestone-solutions.co.uk www.bluestone-solutions.co.uk

Offices in Leicester & Bristol. For all locations contact (0800) 027 3775