

**CAUTION !! All new procedures and processes should be checked in the 'Test' environment before being applied to the 'Live' business system.**

**V10 MASTER PRODUCTION SCHEDULE (MPS) Ver 2**



**1. INTRODUCTION**

The MPS provides an alternative demand for the MRP module (see separate datasheet), and is used to effectively de-link the Sales Orders from the optimised quantities that Production intends to manufacture. The top level item must have the MPS flag set.

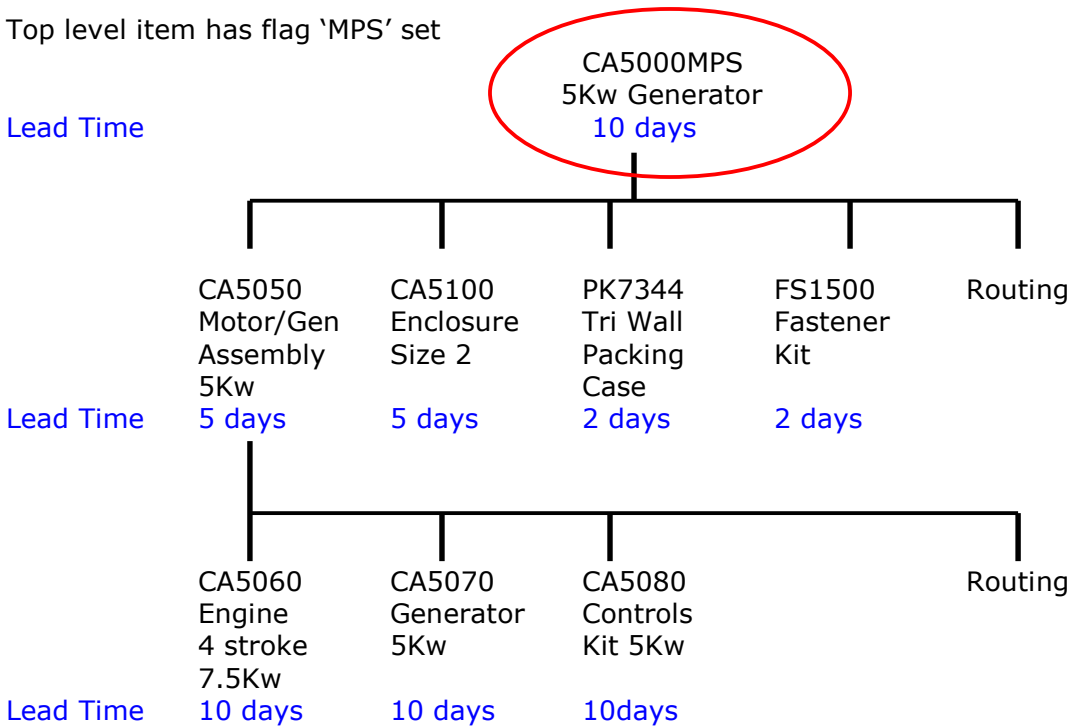
**2. TEST DATA**

The following assembly was used to generate the screens and documents in this datasheet. A basic dataset containing this assembly is available for test purposes. (V10mrpmpsbase6.zip).

**For MPS (Schedule Demand)**

Top level item has flag 'MPS' set

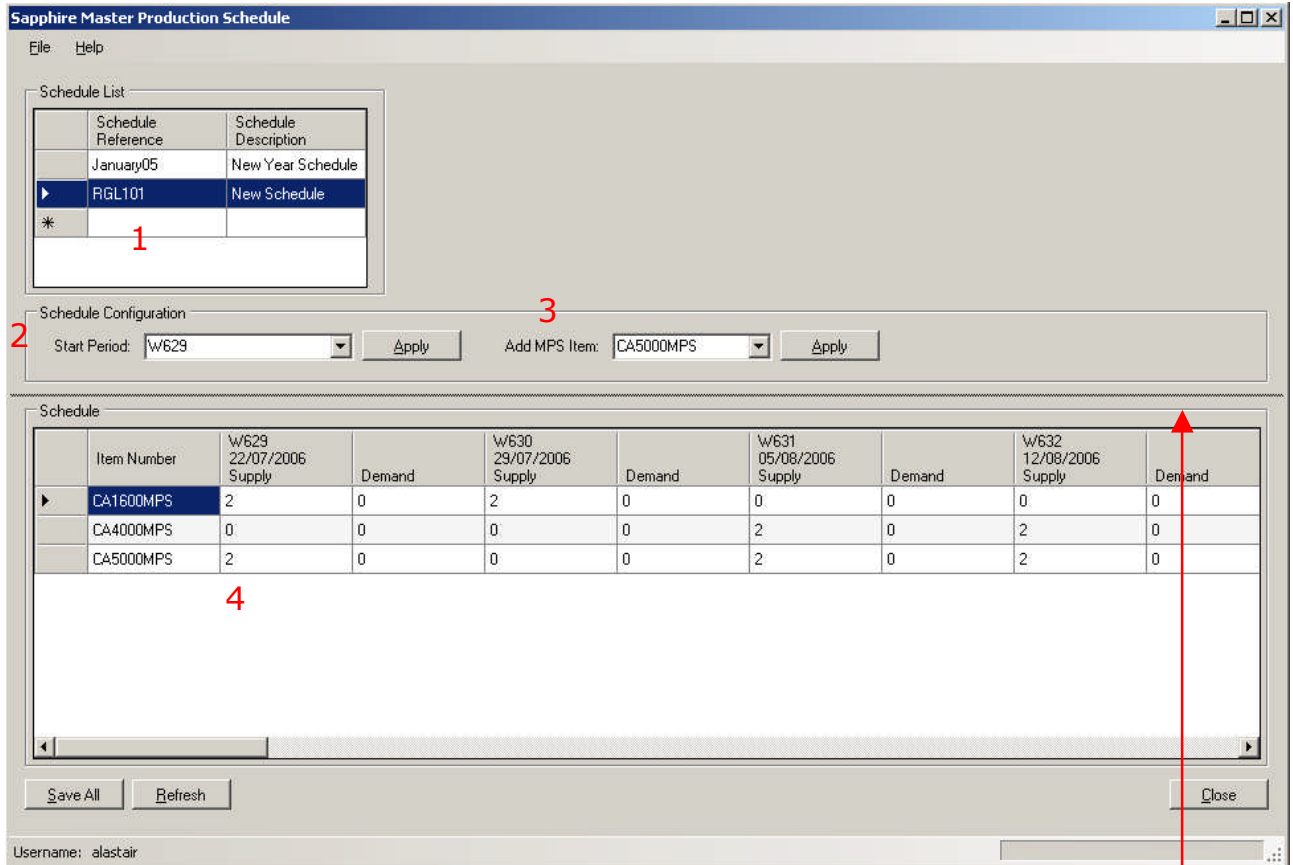
Lead Time



All items Product Group EL30, except parent CA5000, which is in Product Group MPS  
All items MRP=Y

### 3. MPS INPUT SCREEN

The new MPS Input Screen replaces the earlier method of selecting all items in an MPS Product Group(s) by allowing a 'pick list' selection of items to include in the schedule



Click in this area to produce a 'grab line' to enable the size of the panes to be dragged and adjusted

3.1 Click in the blank Schedule Reference box next to the asterisk to enter the reference and description for a new schedule

3.2 Select the schedule start period and then 'Apply' to show the first period on the 'grid'. Use the scroll bar to select period columns to the right of the screen

3.3 Select MPS items from the drop down list to add to the rows of the grid

3.4 Within the schedule area, add the Supply quantities that production will manufacture in each period. The Demand columns are currently text entry to define the Sales Forecast if required and are not 'active'.

3.5 Save All saves the schedule data to the database

3.6 Refresh restores data from the database to the MPS screen

#### BlueStone Solutions for Business

Unit A, Tayside Software Centre, Technology Park, Dundee, DD2 1TY

Email: sales@bluestone-solutions.co.uk www.bluestone-solutions.co.uk

Offices in Leicester & Bristol. For all locations contact (0800) 027 3775

#### 4. Import Data File

Demand can be taken from an imported file, which enables the Production Schedule to be created in a spreadsheet.

The file name is c:\mps.csv, with the following format

Item Number	Period	Date	Quantity
Text 20 char	Text 4 char	Text 8 char	Number 15 numeric (11.4)

A screenshot of Microsoft Excel showing a spreadsheet with 5 rows and 5 columns. The data is as follows:

	1	2	3	4	5
1	CA5000	W531	100805	3	
2	CA5000	W532	180805	3	
3	CA5000	W533	150805	3	
4	CA5000	W534	220805	3	
5					

File as generated/viewed in Excel

A screenshot of Notepad showing the raw CSV data from mps.csv. The data is as follows:

```
CA5000,W531,100805,3
CA5000,W532,180805,3
CA5000,W533,150805,3
CA5000,W534,220805,3
```

File as viewed in Notepad

**5. MPS Trial Kit – following Import Data File**

Item Number	Description	Quantity	Date Req'd	Pri
CA5000	5Kw Generator	3	10/08/2005	1
CA5000	5Kw Generator	3	15/08/2005	1
CA5000	5Kw Generator	3	18/08/2005	1
CA5000	5Kw Generator	3	22/08/2005	1

MPS Trial Kit

Sapphire MRP Data						Date Printed	17 Jun 2005
Master Production Schedule Trial Kit						Printed By	BOBL
						Page Number	1
Component	Description	Quantity Required	Quantity In Stock	Allocated Stock	Available	Short	
CA5000	5Kw Generator	3.0000		Date Required 10 Aug 2005	Priority 1		
CA5050	Motor/Generator Assembly 5kw	3.0000	0.0000	0.0000	0.0000	3.0000	
CA5100	Enclosure size 2	3.0000	0.0000	0.0000	0.0000	3.0000	
FS1500	Fastener Kit	3.0000	0.0000	0.0000	0.0000	3.0000	
PK7344	Tri Wall Packing Case	3.0000	0.0000	0.0000	0.0000	3.0000	
CA5000	5Kw Generator	3.0000		Date Required 15 Aug 2005	Priority 1		
CA5050	Motor/Generator Assembly 5kw	3.0000	0.0000	3.0000	-3.0000	6.0000	
CA5100	Enclosure size 2	3.0000	0.0000	3.0000	-3.0000	6.0000	
FS1500	Fastener Kit	3.0000	0.0000	3.0000	-3.0000	6.0000	
PK7344	Tri Wall Packing Case	3.0000	0.0000	3.0000	-3.0000	6.0000	
CA5000	5Kw Generator	3.0000		Date Required 18 Aug 2005	Priority 1		
CA5050	Motor/Generator Assembly 5kw	3.0000	0.0000	6.0000	-6.0000	9.0000	
CA5100	Enclosure size 2	3.0000	0.0000	6.0000	-6.0000	9.0000	
FS1500	Fastener Kit	3.0000	0.0000	6.0000	-6.0000	9.0000	
PK7344	Tri Wall Packing Case	3.0000	0.0000	6.0000	-6.0000	9.0000	
CA5000	5Kw Generator	3.0000		Date Required 22 Aug 2005	Priority 1		
CA5050	Motor/Generator Assembly 5kw	3.0000	0.0000	9.0000	-9.0000	12.0000	
CA5100	Enclosure size 2	3.0000	0.0000	9.0000	-9.0000	12.0000	
FS1500	Fastener Kit	3.0000	0.0000	9.0000	-9.0000	12.0000	
PK7344	Tri Wall Packing Case	3.0000	0.0000	9.0000	-9.0000	12.0000	