

CAUTION !! All new procedures and processes should be checked in the 'Test' environment before being applied to the 'Live' business system.

'BENCHMARK' NETWORK TEST UTILITY – Ver 2

The purpose of the utility program is to check the speed of individual client machines writing data across the network, and also to compare the performance of two or more clients writing records simultaneously to check for record locking. The test results are logged on a copy of the spreadsheet 'benchmark.xls'. Any particularly slow machines should then be identified.

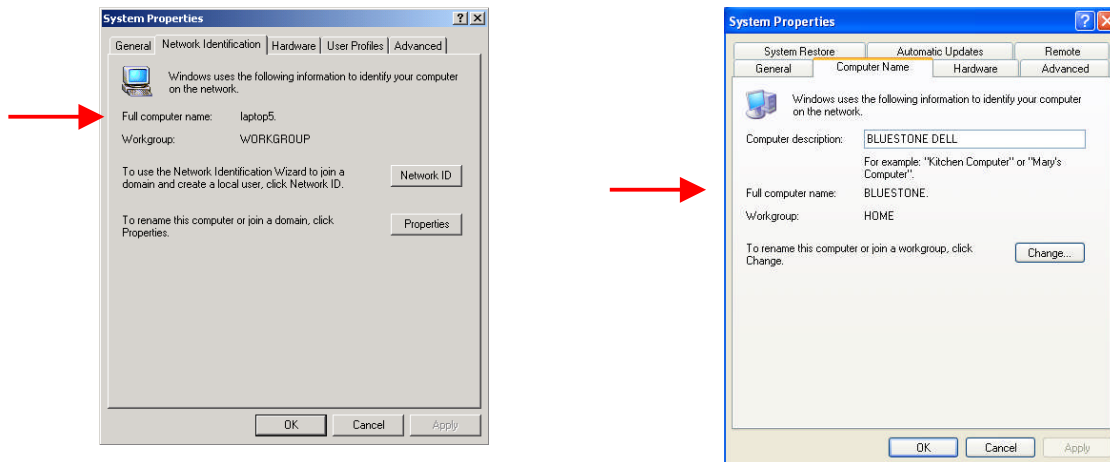
1. ENTERING DATA ON THE BENCHMARK SPREADSHEET

Enter the following information for each individual machine being tested on the Benchmark spreadsheet (see the example spreadsheet):

User the name of the person normally using the machine, or the main user

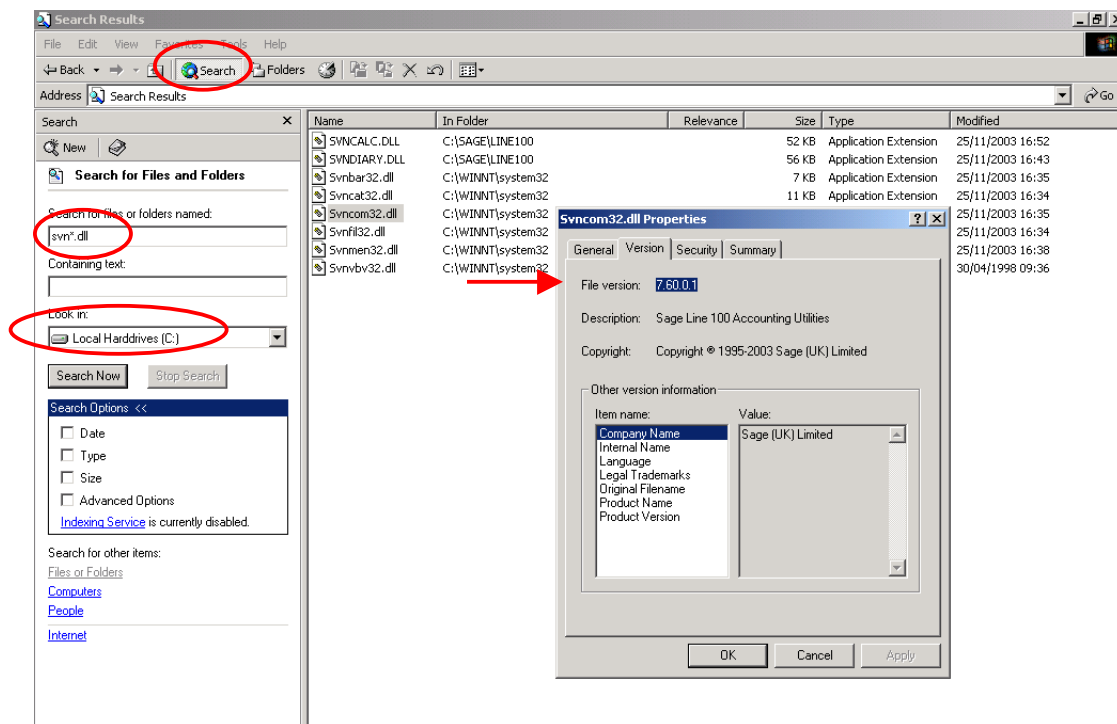
Computer Name this is the Network Identification name for each of the clients.

On a Windows 2000 machine select Start, Settings, Control Panel, System, Network Identification



On a Windows XP machine select Start, Control Panel, Performance and Maintenance, System, Computer Name

Sage L100 Version – check the versions of the installed .dll files. From Windows Explorer select Search, search for files named svn*.dll and check the version of one of the files (for example svncom32.dll) by right clicking the file name and selecting Properties and then Version. Enter the File Version on the spreadsheet and then Cancel the Properties window and close Windows Explorer.



Operating System – for example WIN98, WIN2000, XP

Notes – this column can be used to enter information such as the main use of the machine Purchasing, Goods In etc. The Network Card type could also be usefully added. See Start, Control Panel, Network & Internet Connections, Network Connections, Device Name

2. TEST 1 – Single Machine 1000 Record Write Time

Logon to the client machine. A user name with a standard numbered menu should be selected (see Appendix)

From each client machine, select option 2 from the menu 'Run Comparative Test'. The number of records being created will be displayed during the test. Enter the **Start Time** and **End Time** displayed at the end of the test on the spreadsheet. The elapsed time will then be calculated.

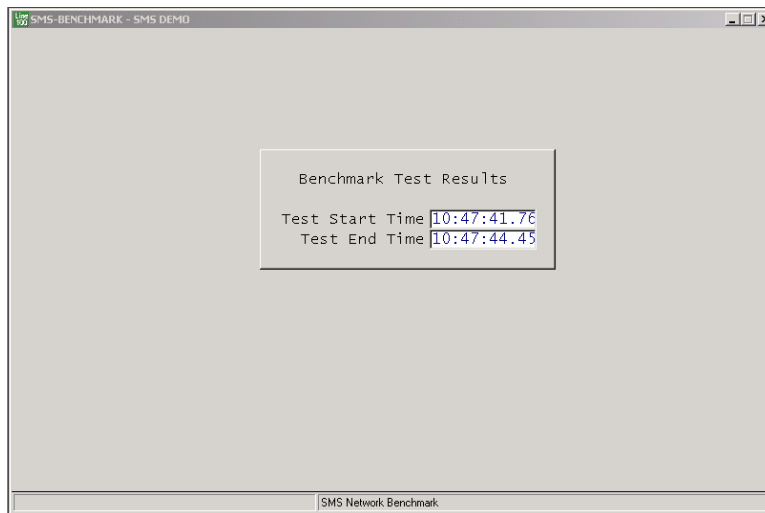
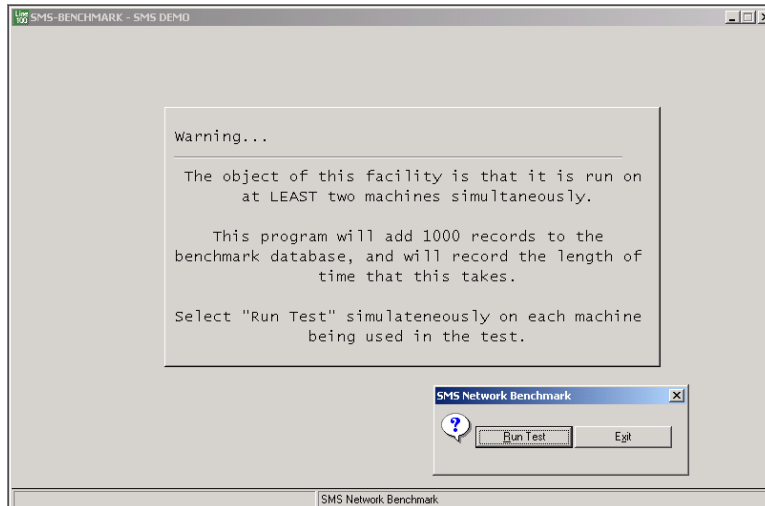
NOTE THE FORMAT FOR DATA ENTRY mm:ss.00 particularly the use of the colon and full stop

BlueStone Solutions for Business

Unit A, Tayside Software Centre, Technology Park, Dundee, DD2 1TY

Email: sales@bluestone-solutions.co.uk www.bluestone-solutions.co.uk

Offices in Leicester & Bristol. For all locations contact (0800) 027 3775



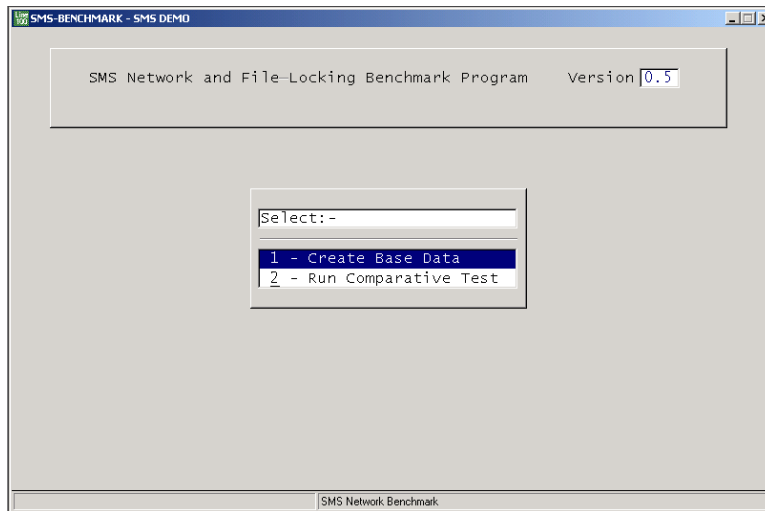
In this example the time taken was 2.69 seconds. Click 'OK' to end the test and continue.

3. TEST 2 – Run Comparative Test for Groups 1000 Record Write Time

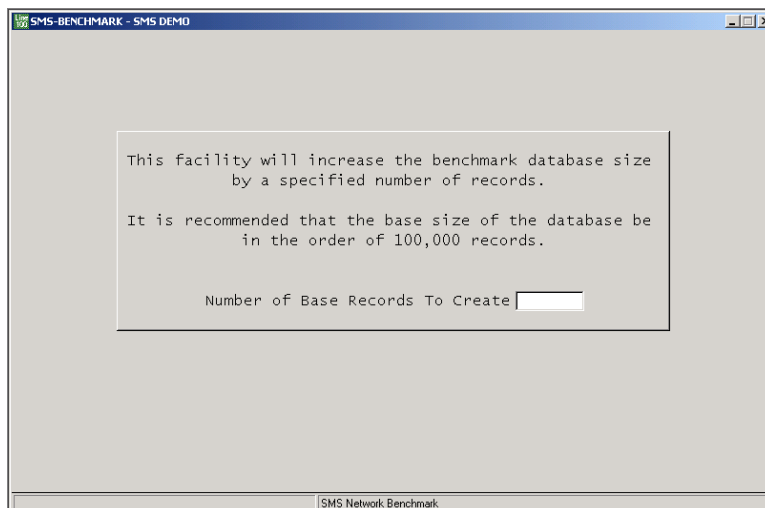
Select pairs of machines based on the above results. Typically select the slowest machine pair, the fastest machine pair, and select machines located physically adjacent and distant across the network.

Enter a Group number for each pair, and the Start Time and End Time. See the example spreadsheet.

4 TEST 3 – Create Base Data 20K Records



From each client machine select option 1 – Create Base Data



Enter the quantity of records to be created, in this case using 20,000. Click 'Accept'. The selected number of records is created, the number being displayed during the process, and then returning to the opening screen on completion.

The machine should create the selected number of records without stopping or freezing. If the machine fails to complete the test it would indicate that the network connection had failed. Enter Pass or Fail on the spreadsheet – see the example

BlueStone Solutions for Business

Unit A, Tayside Software Centre, Technology Park, Dundee, DD2 1TY

Email: sales@bluestone-solutions.co.uk www.bluestone-solutions.co.uk

Offices in Leicester & Bristol. For all locations contact (0800) 027 3775

APPENDIX

Installation

Copy the Benchmark programs SMSBEN.SKO and SMSBEN.SKF into the SVNPROGS folder on the server.

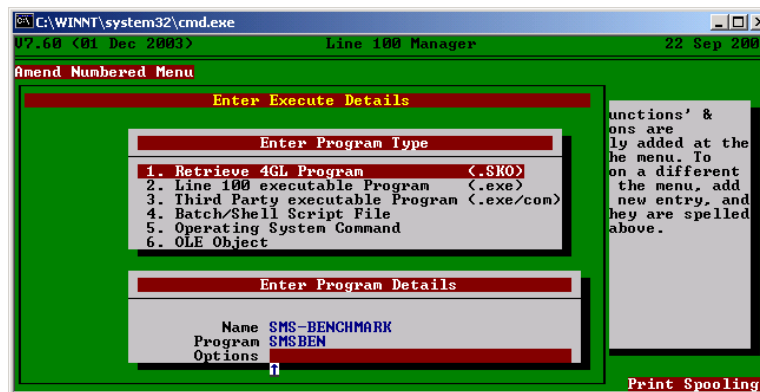
Alternatively, copy the programs BESPOKE.SKD, DMPCTRL.RND, SMSBEN.SKO and SMSBEN.SKF from the Sapphire CD, Utilities, Benchmark, into a folder on a client machine, for example c:\import.

Log into the system as 'Manager', and from the menu select External Update, Import a Database. Enter the path to the files location (for example c:\import). Do not take the option to rebuild the data dictionary when prompted.

Menu Settings

The program start command should be added to the standard numbered menu. Login as 'Manager' and select 'Amend Numbered Menu'.

Add the program name 'Benchmark'. The Retrieve 4GL DOS name is SMS-BENCHMARK, and the program is SMSBEN. Leave the Options blank.



Users for Benchmark Test

It may be useful to add additional users with a standard menu, named for example STANDARD1 and STANDARD2.

Alternatively users named say BENCHMARK1 and BENCHMARK2 could be added with own menus just containing the Benchmark option, to avoid altering the standard menu.

BlueStone Solutions for Business

Unit A, Tayside Software Centre, Technology Park, Dundee, DD2 1TY

Email: sales@bluestone-solutions.co.uk www.bluestone-solutions.co.uk

Offices in Leicester & Bristol. For all locations contact (0800) 027 3775