

CAUTION !! All new procedures and processes should be checked in the 'Test' environment before being applied to the 'Live' business system.

REPORTING – Ver 2

(This document should be read in conjunction with the Exporter manual and the Excel file described below)

1. INTRODUCTION

The primary method of reporting from the Sapphire V9 system is by the Exporter module. This creates a copy of the data as a separate Access database (.mdb file), which can then be interrogated by standard Access tools. The .mdb file has the relationships and links applied between the tables as defined within the default.cfg file. This file can be modified via the application (see the Exporter manual) to add additional relationships as the file structure is modified, reporting requirements change, or bespoke programs are added.

2. DATA STRUCTURE

The Sapphire product is being continually improved and developed, and therefore subject to change at the data structure level. To accommodate these changes the general principles are outlined throughout this document, as guidance to users.

2.1 The Excel file 'tablenames.xls' has been compiled from the Configuration file (default.cfg) within Exporter and the 'Examine Data File' utility program within Sapphire and helps explain the structure of the database files and the naming conventions.

The spreadsheet is provided as a 'partially completed template' that users can add to or modify to suit their own reporting requirements.

2.2 The Examine Data File Utility program is essentially the 'dfedfil.exe' program supplied by Sage.

2.3 The default.cfg file is located in the folder *Program Files, SMS Line 100 Data Export*. Make a copy of the program, rename it default.txt and save it in another folder. DO NOT open and examine the default.cfg file to avoid the risk of altering the content and corrupting the file. The .txt copy can be opened in Notepad.

3. TABLENAMES.XLS

TABLE	TABLE NAME FROM EXPORTER	DESCRIPTION	SCHEMA NAME FROM "EXAMINE DATA FILE"	FILE NAME
1		Alternative Descriptions from 'Examine Data File' shown in brackets ()		
BM	SAPPHIRE_MANU.MAC_PARENT	Bill Of Materials Header	MCN-PARENT	MACHPAR
BM	SAPPHIRE_MANU.SMS_BOM_NOTES	Header Notes (Bill of Materials Notes)	SMS-BOM-NOTES	SMSBOMN
BM	SAPPHIRE_MANU.MAC_BOM	Bill Of Materials Components	MCN-BOM	MACHBOM
BM	SAPPHIRE_MANU.SMS_BOM_COMP_NOTES	Component Notes	SMS-BOM-COMP-NOTES	SMSBOCN
BM	SAPPHIRE_MANU.SMS_BOM_ALTERNATIVES	Component Alternatives	SMS-BOM-ALTERNATIVES	SMSBOMA
BM	SAPPHIRE_MANU.MAC_BOM_PROCESS	Bill Of Materials Operations (Bill of Materials Routing)	MCN-BOM-PROCESS	MACHBPR
BM	SAPPHIRE_MANU.SMS_ROUTING_NOTES	Operation Notes (BOM Routing Notes)	SMS-ROUTING-NOTES	SMSRONO
BM	SAPPHIRE_MANU.SMS_BOM_RESOURCE	Operation Resources (Bill of Materials Resources)	SMS-BOM-RESOURCE	SMSBOMR
BM	SAPPHIRE_MANU.SMS_BM_CHANGE_NOTICE	Change Notices	SMS-BM-CHANGE-NOTICE	SMSBMCN
BM	SAPPHIRE_MANU.SMS_CHNG_NOTICE_NOTE	Change Notice Notes	SMS-CHNG-NOTICE-NOTE	SMSCHNN
BM	SAPPHIRE_DISTRIB.SMS_STANDARD_COSTING	Costing Information	SMS-STANDARD-COSTING	SMSSCOS

3.1. This is the table name as shown in the default.txt file (also in the file Description in 'Examine Data File') which identifies the functionality group. The main groups are

- BM Bill of Materials
- CC Contract Costing
- PO Purchase Order Processing
- SC Stock Control
- SO Sales Order Processing
- WO Works Order Processing

Other groups can be identified by examining the default.txt file.

3.2 The Table Name is a concatenation of the database and the table

SAPPHIRE_MANU.MAC_PARENT

SAPPHIRE_MANU.SMS_BOM_NOTES

Database Name Table Name

The Tables are also associated with sub-tables. Note that the Tables are the Header table names accessed by the ODBC links to Exporter, Access and Excel. The sub tables are accessed by the Examine Data File utility, and generally (but not always) have the same name. In the above cases as an illustration:

HEADER TABLE	MAC_PARENT	SMS_BOM_NOTES
SUB TABLE	MCN-PARENT	SMS-BOM-NOTES

Note the conversion between MAC for the header and MCN for the sub-table. Similarly, the conversion from _ to - separators.

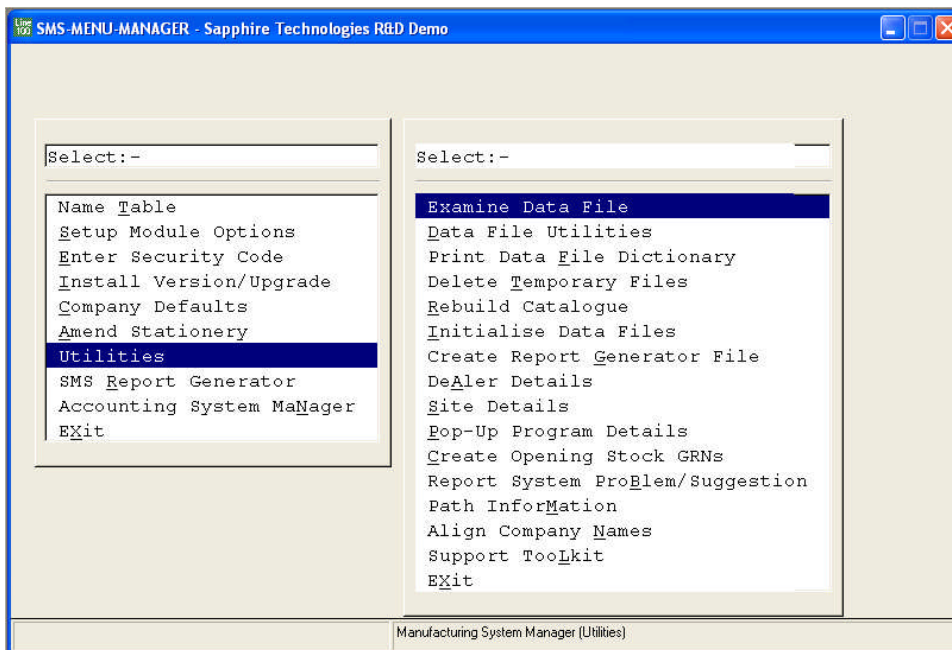
3.3 The Description is shown as reported by Exporter. This is generally (but not always) the same for the Examine Data File utility. Any minor differences as shown by the Examine Data File utility are shown in brackets.

3.4 The Schema name as reported by the Examine Data File utility

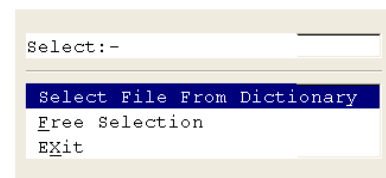
3.5 The system file name (see the System Manager Manual section 1.3)

4. EXAMINE DATA FILE

This utility is located in *Sapphire System Manager, Utilities, Examine Data File*



There are 2 entry options on the next screen and 'Exit'



4.1 Select File From Dictionary

Enables the file to be entered by entering the Schema Name (see 3.4), the File Name (see 3.5) or the Description (see 3.3). All of the fields have a drop down box for selection, or the first few characters can be entered followed by 'Return'.

Select File

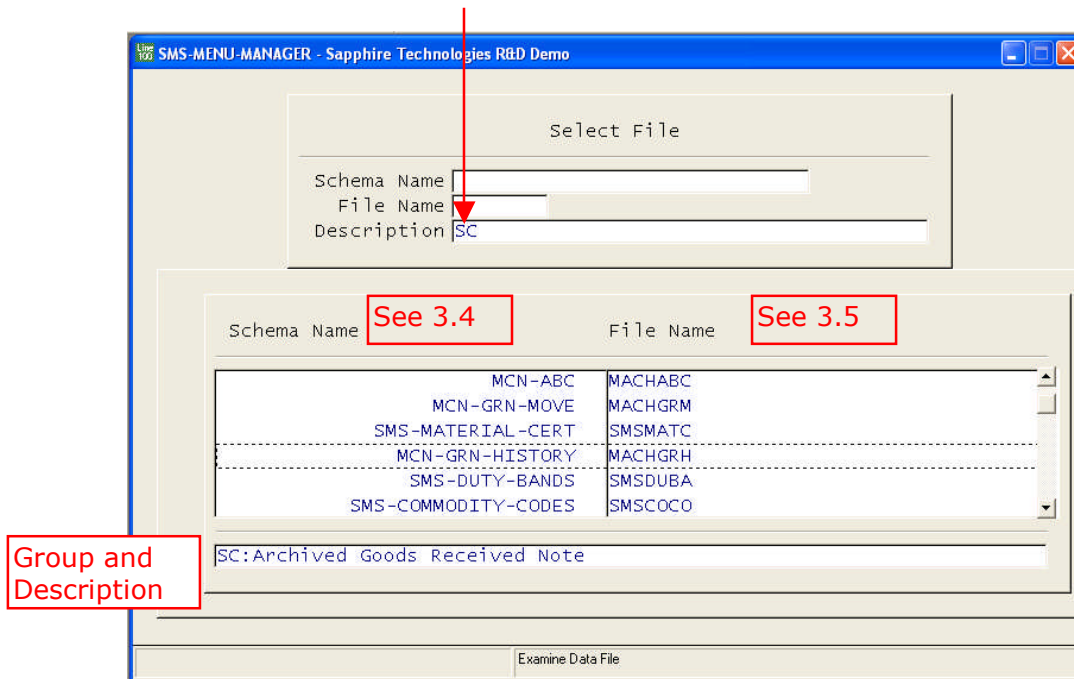
Schema Name

File Name

Description

Entering the 'group' in Description will apply a filter to show only the files in that group.

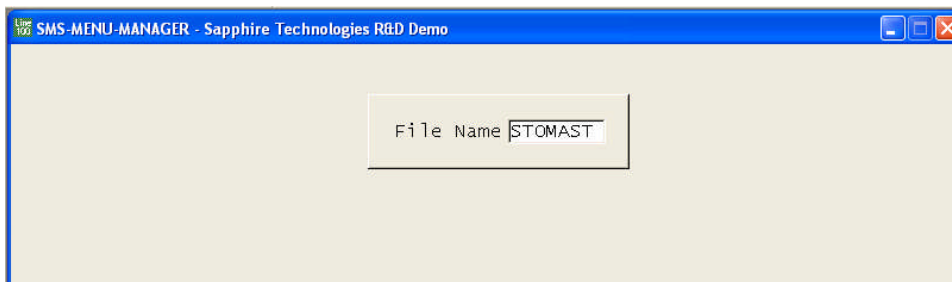
For example, enter SC to view all Stock Control files



Press 'Return' to accept

NOTE !! The stock control files are a special case as the Stock Control File (STOMAST) and the Stock Product Groups (STOPROD) are held within the Line 100 (L1) group

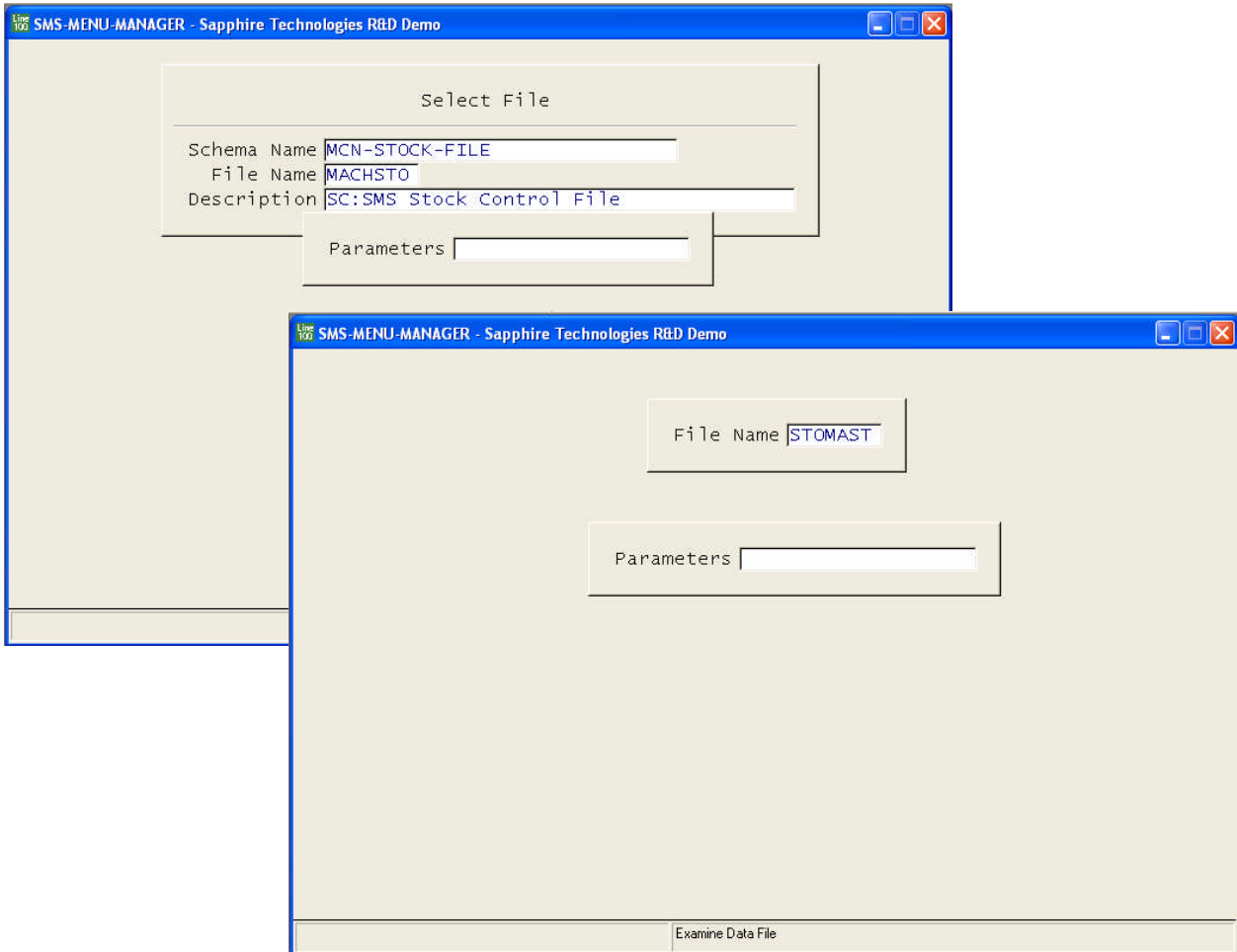
4.2 Free Selection



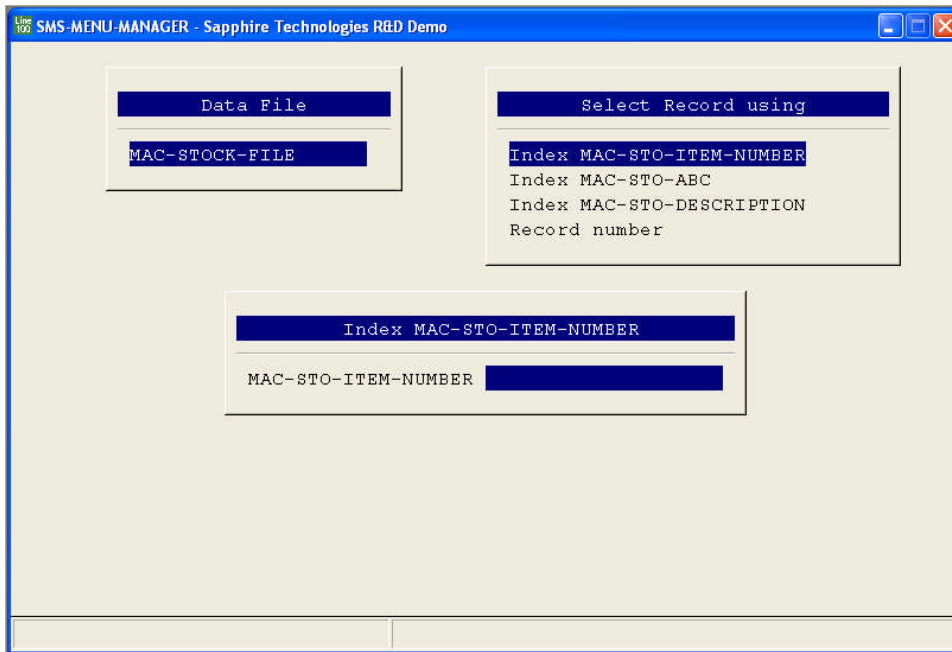
The filename must be entered (see 3.5). Note that the field is not case sensitive.

4.3 Parameters

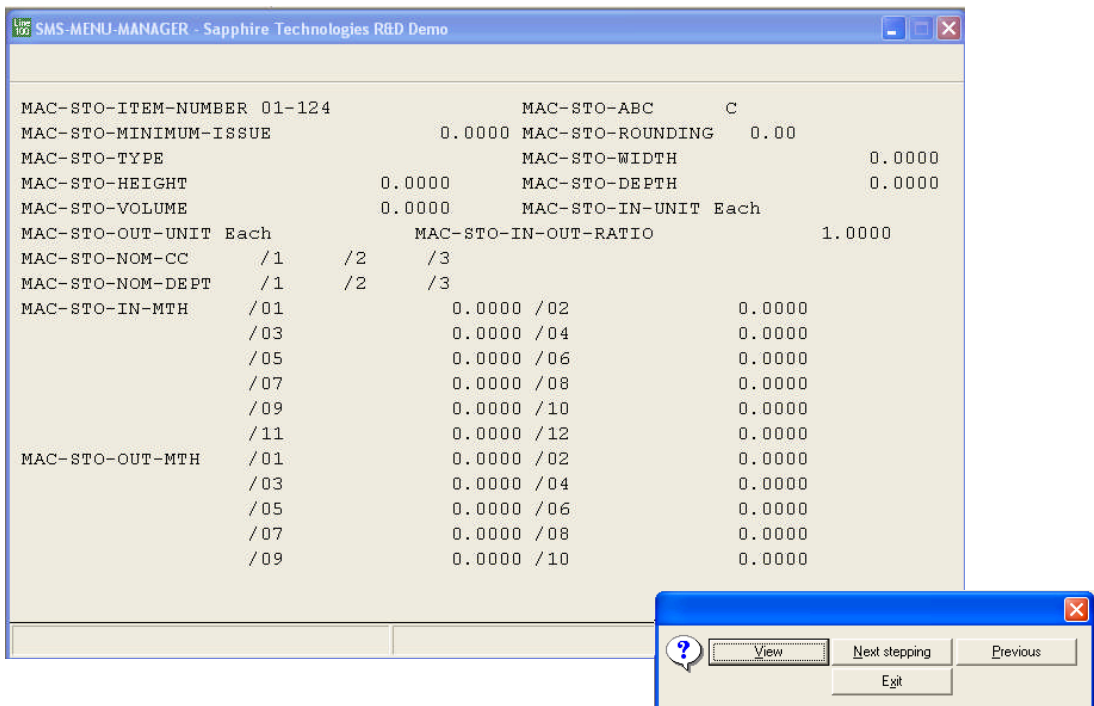
For either of the above selection methods DO NOT enter any Parameters unless instructed to do so under guidance from SMS Support. Press 'Return'



4.4 View Records & Fields



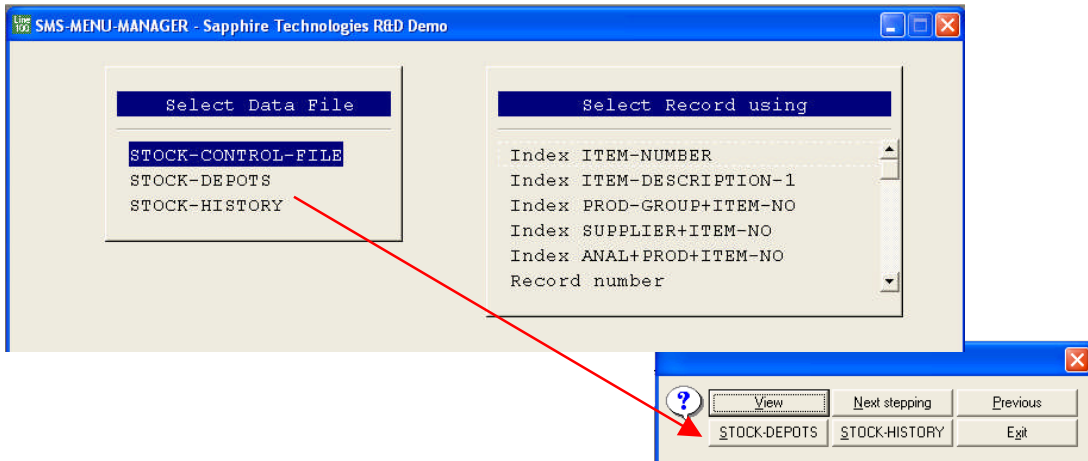
Enter the Item Number to be viewed or 'Return' to start at the beginning of the database. Note that the field is case sensitive.



Use 'View' to step through all the fields on the record, (there may well be more fields to view than shown on the above first screen) and 'Next' or 'Previous' to see other records in the table.

Viewing the fields enables them to be identified by content, for inclusion in any custom reports.

The base menu will also allow associated Data Files to be viewed where appropriate. The example below is for the STOMAST Stock Control File

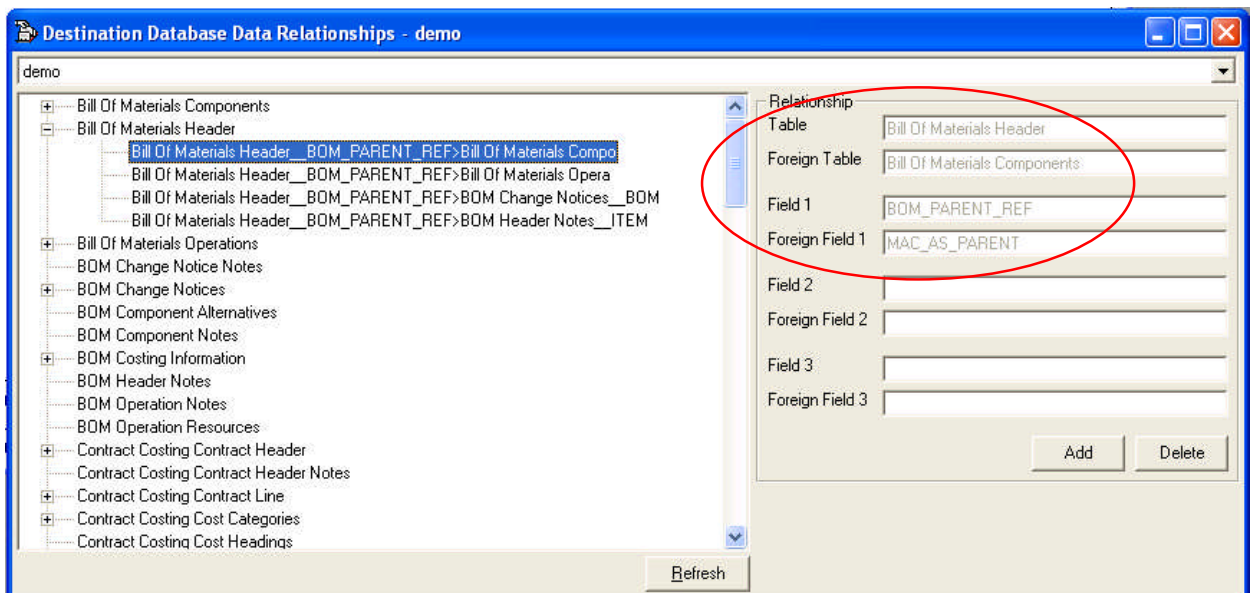


5. Reports using Exporter

Reports are generated through Access on the generated .mdb files. Please see the Exporter manual.

6. Reports using Excel

6.1 Simple reports can also be generated using Excel. In general these should only be reports containing one or two linked tables due to the linking restrictions within Excel compared to Access. The above methods of identifying files and fields using Exporter still apply. In particular note the 'Relationships' function within Exporter that shows the links between files. Please refer to Support for additional Relationships/Links.



This screen shows the link fields between Bill of Materials Header and Bill of Materials Components in Exporter.

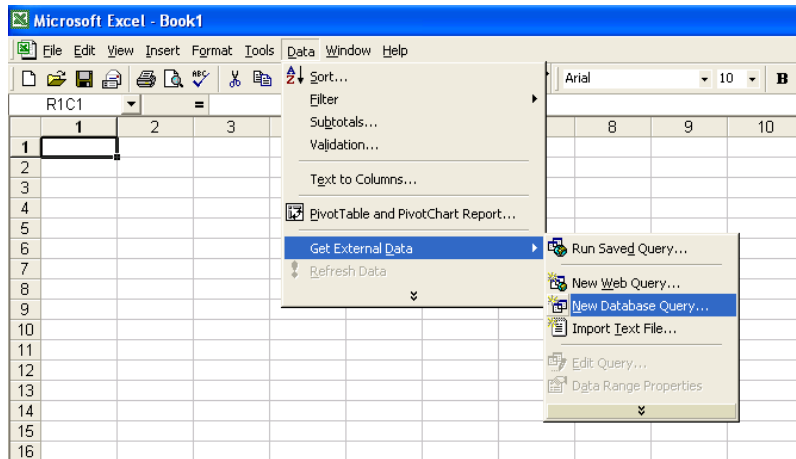
BlueStone Solutions for Business

Unit A, Tayside Software Centre, Technology Park, Dundee, DD2 1TY

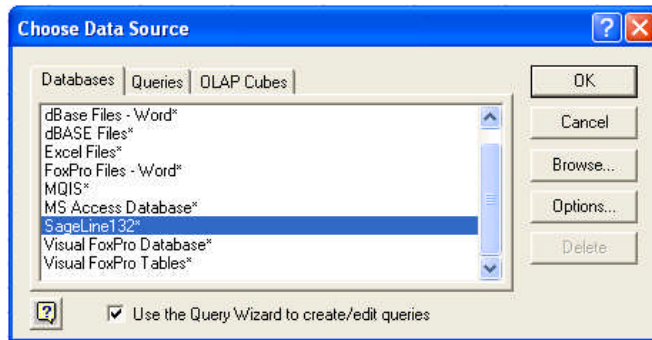
Email: sales@bluestone-solutions.co.uk www.bluestone-solutions.co.uk

Offices in Leicester & Bristol. For all locations contact (0800) 027 3775

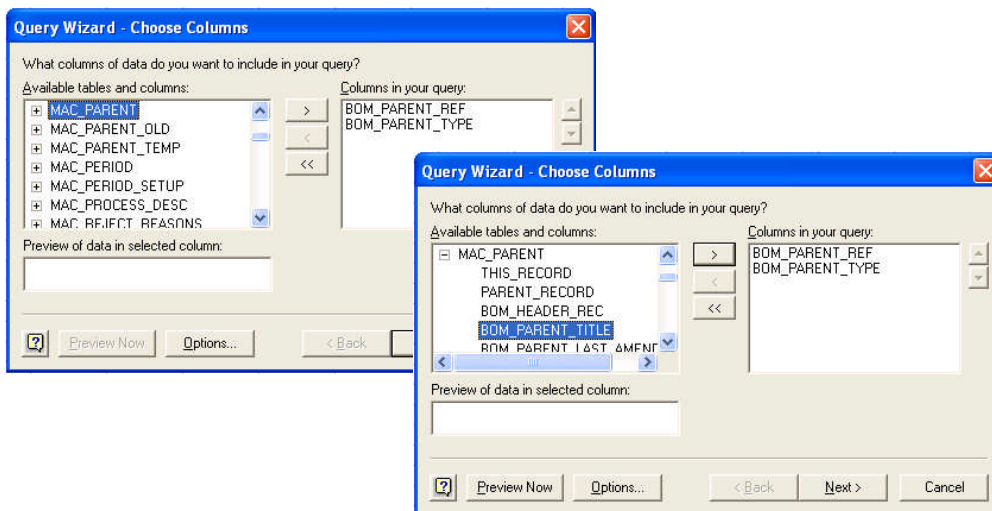
6.2 Open Excel and select *Data, Get External Data, New Database Query*



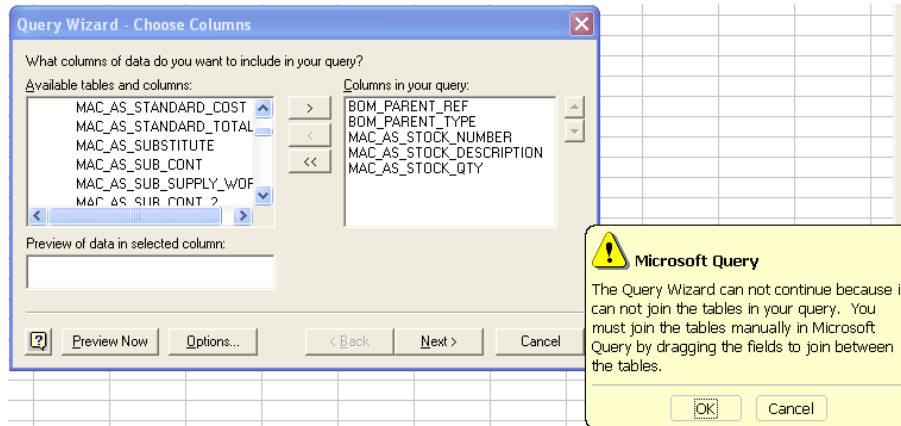
6.3 Select the ODBC driver configured for use with Exporter, that points to the relevant dataset, and logon to the dataset using the normal user password.



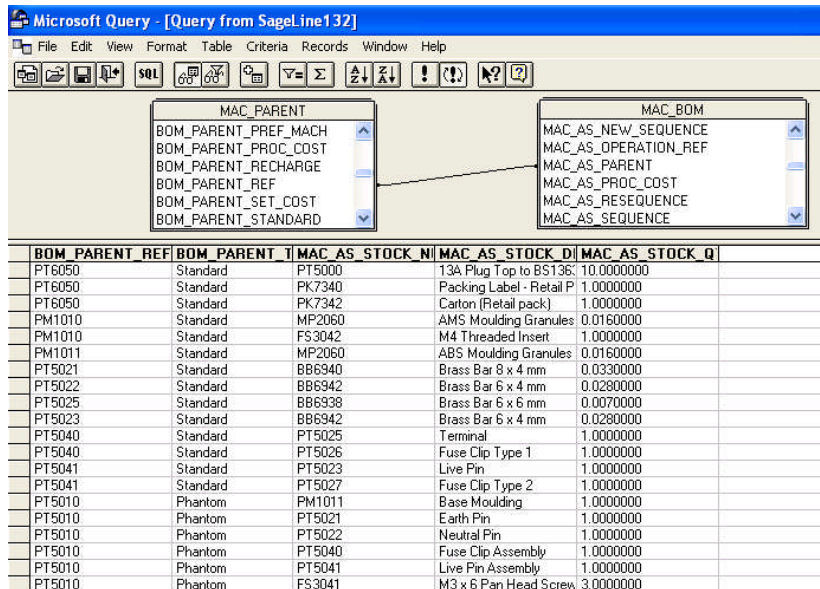
6.4 Select the file required and click on the '+' to list the fields. Select the fields to be used by highlighting them and using the > button to select them. The < button deselects individual fields and the << button deselects all fields. Repeat for another file to be linked if required.



6.5 Click 'Next' and then 'OK' to accept manually joining tables

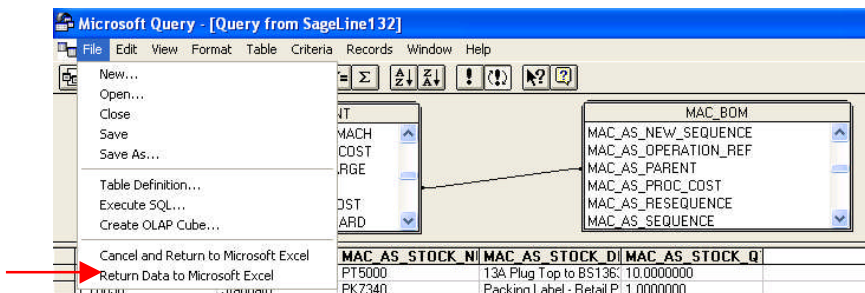


6.6 Click on the link field in the main table (in this case the BOM Header MAC_PARENT) and drag across to the link field on the other table



Note that the tables can be dragged into position and resized as required

6.7 Select File, Return Data to Microsoft Excel



Data Sheet for Reporting

6.8 Click OK to accept the data position as the top left corner. The data is transferred to Excel and can now be formatted as required using Excel tools.

	1	2	3	4	5	6
1	ASSEMBLY	DESCRIPTION	TYPE	COMPONENT ITEM No.	COMPONENT DESCRIPTION	QTY
2						
3	PT6050	Retail Pack (of 10) 13A Plugs	Standard	PT5000	13A Plug Top to BS1363	10
4		Retail Pack (of 10) 13A Plugs	Standard	PK7340	Packing Label - Retail Pack	1
5		Retail Pack (of 10) 13A Plugs	Standard	PK7342	Carton (Retail pack)	1
6	PM1010	Cover Moulding	Standard	MP2060	AMS Moulding Granules (White)	0.016
7		Cover Moulding	Standard	FS3042	M4 Threaded Insert	1
8	PM1011	Base Moulding	Standard	MP2060	ABS Moulding Granules (White)	0.016
9	PT5021	Earth Pin	Standard	BB6940	Brass Bar 8 x 4 mm	0.033
10	PT5022	Neutral Pin	Standard	BB6942	Brass Bar 6 x 4 mm	0.028
11	PT5025	Terminal	Standard	BB6938	Brass Bar 6 x 6 mm	0.007
12	PT5023	Live Pin	Standard	BB6942	Brass Bar 6 x 4 mm	0.028
13	PT5040	Fuse Clip Assembly	Standard	PT5025	Terminal	1
14		Fuse Clip Assembly	Standard	PT5026	Fuse Clip Type 1	1
15	PT5041	Live Pin Assembly	Standard	PT5023	Live Pin	1
16		Live Pin Assembly	Standard	PT5027	Fuse Clip Type 2	1
17	PT5010	Base Assembly (Phantom)	Phantom	PM1011	Base Moulding	1
18		Base Assembly (Phantom)	Phantom	PT5021	Earth Pin	1
19		Base Assembly (Phantom)	Phantom	PT5022	Neutral Pin	1
20		Base Assembly (Phantom)	Phantom	PT5040	Fuse Clip Assembly	1
21		Base Assembly (Phantom)	Phantom	PT5041	Live Pin Assembly	1
22		Base Assembly (Phantom)	Phantom	FS3041	M3 x 6 Pan Head Screw	3

BlueStone Solutions for Business

Unit A, Tayside Software Centre, Technology Park, Dundee, DD2 1TY

Email: sales@bluestone-solutions.co.uk www.bluestone-solutions.co.uk

Offices in Leicester & Bristol. For all locations contact (0800) 027 3775