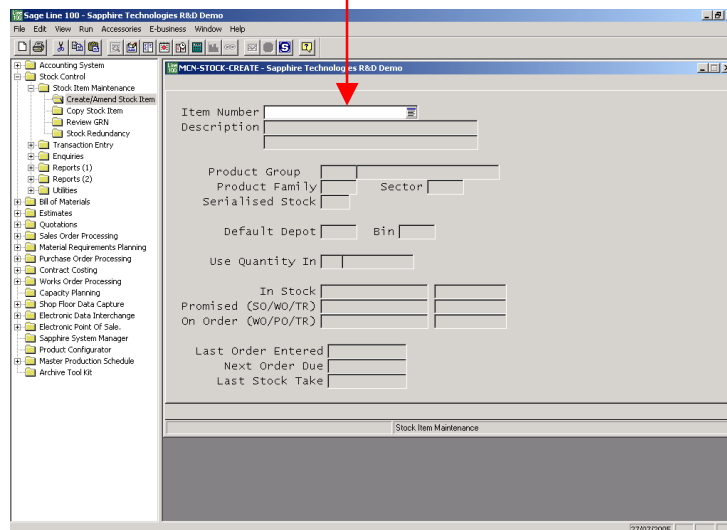
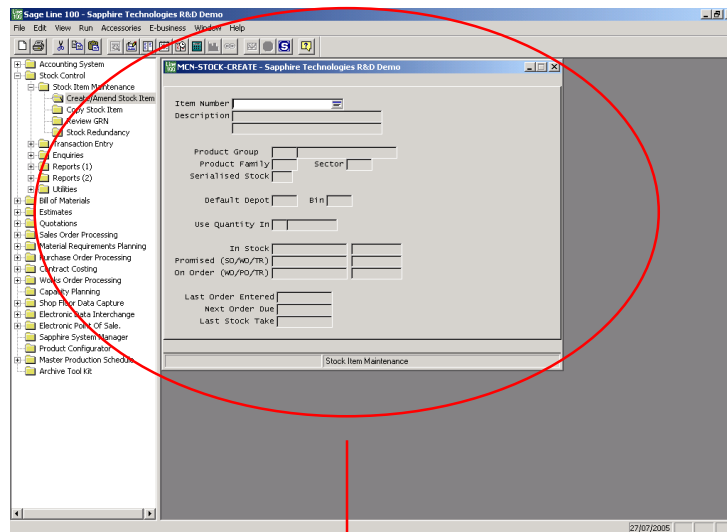


CAUTION !! All new procedures and processes should be checked in the 'Test' environment before being applied to the 'Live' business system.

SCREEN COLOURS & SIZES Ver 3

Using the font size in the SVN4WIN.INI file, the size of the active window can be adjusted. The text colours can also be changed to make the screens easier to read.



The SVN4WIN.INI file is normally located in the C:\WINNT directory or equivalent on the client machines. If necessary use the Search command to locate the file.

IMPORTANT NOTE !! Before making any changes to this file, use File, Save As to make a copy renamed as say SVN4WINORIG.INI as a 'safe' copy. Log out of SMS and log back in to apply the changes.

The following notes are abbreviated and extracted from the 'Sage L100 Developers Help' file HANDBOOK.CHM.

```
[Window]

ThreeD=1
TypeSizeLoc=1,566,474,0,0
Filltextwindow=0
FieldColour=9
PromptColour=0

This remembers the last used type, size and location of the Window. Do not amend this setting.

The Filltextwindow setting uses the value of 0 (the default) or 1. This controls the type of form displayed. 0 will cause boxes with a white background to be displayed, whilst a value of 1 will generate a display with a grey background.

Both the FieldColour and PromptColour use a colour index which can be one of the following values:

0 - Black
1 - Dark Red
2 - Dark Green
3 - Brown
4 - Dark Blue
5 - Purple
6 - Dark Cyan
7 - Dark Grey
8 - Light Grey
9 - Red
10 - Green
11 - Yellow
12 - Blue
13 - Purple
14 - Cyan
15 - White
```

The above table shows the available colours that can be selected. For example,

- FieldColour=4 gives a Dark Blue text – see below
- PromptColour=9 gives a Red text – see below

The SVN4WIN.INI file should be opened using Notepad, and if the [Window] and [Font] chapters are not shown within the file then they must be added as shown below. Take care to ensure that the text is added exactly as shown. Do not amend any other lines within the file unless instructed to do so by SMS Support.

It is recommended that the Window size is set, with the FieldColour optionally changed as shown to make the screen easier to read.

Lucida Console is a good choice for the font as it is a fixed pitch. Take care if using other fonts particularly proportional pitch fonts.

The PromptColour line is seldom added but can optionally be inserted as shown.

BlueStone Solutions for Business

Unit A, Tayside Software Centre, Technology Park, Dundee, DD2 1TY

Email: sales@bluestone-solutions.co.uk www.bluestone-solutions.co.uk

Offices in Leicester & Bristol. For all locations contact (0800) 027 3775

Data Sheet for Screen Colours & Sizes

```

SVN4WIN.INI - Notepad
File Edit Format Help
[SVNCOM]
SVNDR=C:\SAGE\LINE100,C:\SAGE\SVNDATA,C:\SAGE\SVNSPOOL,,C:\SAGE\SVNPROGS
[Environment]
SVNDR=C:\SAGE\LINE100,C:\SAGE\SVNDATA,C:\SAGE\SVNSPOOL,,C:\SAGE\SVNPROGS
CommandLine=FILES:50 COLOUR:ALL:NOSWAP SP:ON
[DataMap]
5=1
13=1
2=2
3=1
4=1
7=1
8=2
9=1
10=1
11=1
12=1
15=1
16=1
6=1
[window]
FieldColour=4
PromptColour=9
TypeSizeLoc=1,800,507,0,0
PressSpace=45,615
MessageBox=622,619
[Font]
Points=12
Charset=0
Name=Lucida Console
[Line100WindowPos]
PositionTree=0,1,4294967295,4294967295,4294967295,4294967295,0,31,212,684
    
```

Sets Window size

Note !!

The PromptColour=9 line is usually omitted to leave the text black as normal. The example is shown for illustration only