

CAUTION !! All new procedures and processes should be checked in the 'Test' environment before being applied to the 'Live' business system.

CHANGES TO VERSION 10 PROGRAMS – Ver 2



1. SUMMARY

GENERAL

Some indexes are now reversed to show Latest First, for example the Picking List. Other indexes will be reversed as later Service Packs are introduced and where this is possible

STOCK CONTROL

Introduces new feature of batch suffixing to show split from original batch and improve traceability based on Batch Number instead of GRN number.

- Goods In – Serial/Multi-Batch GRN's
- Move Stock, Split Batch
- Transfer Requests and Receipt
- View GRN, now has filter by Batch option
- New Slow Moving Stock Report (from SP2)
- Improved Basic Stock Reorder Report (from SP2)
- MPS Flag added to Stock Record
- Redundant Flag added to Stock Record

SALES ORDER PROCESSING

- Restriction on adding MFR item with no BOM amended by Warning Message (from SP2)

PURCHASE ORDER PROCESSING

- Book Goods In
- New Purchase Order Receipts Report (from SP2)

WORKS ORDER PROCESSING

- Create Works Order
 - Stays within window to allow view
 - Can Apply Increment & MOQ from the Stock Record
 - 'Cascades' Due Dates from Stock Record leadtime when creating orders for sub-assemblies
 - Start & End Date warning amended at order entry
- WIP Manager
 - New Feature - see separate datasheet
- WIP Costing & WIP Report rewritten – see separate datasheet
- New Works Order Scheduling feature

BlueStone Solutions for Business

Unit A, Tayside Software Centre, Technology Park, Dundee, DD2 1TY

Email: sales@bluestone-solutions.co.uk www.bluestone-solutions.co.uk

Offices in Leicester & Bristol. For all locations contact (0800) 027 3775

Data Sheet for Version 10 Changes

BOM

- BOM Costing rewritten – see separate datasheet

MRP

- The module has been completely rewritten based on new algorithms.

MPS

- Existing 4GL version now replaced with the V12 version (C# .net)

BlueStone Solutions for Business

Unit A, Tayside Software Centre, Technology Park, Dundee, DD2 1TY

Email: sales@bluestone-solutions.co.uk www.bluestone-solutions.co.uk

Offices in Leicester & Bristol. For all locations contact (0800) 027 3775

2. STOCK CONTROL – BATCH TRACE

Stock Control, Utilities, Parameters, Options, GRN's

Stock Control Options - GRNs

Automatic GRN Numbering YES Last GRN Number
 Batch/Serial Number Prefix Last Batch/Serial No
 Batch/Serial Number Length
 Label File Name .
 Path to Label File

Automatically place new GRNs on hold NO
 Unique GRNs YES
 Calculate available quantity when using View GRNs NO
 Allow held GRNs to be moved NO
 Adjust GRN Original Qty during Stock Move NO
 Batch Number is Mandatory YES
 Check for unique serial/batch numbers on generating GRN YES
 Allow user defined Depot/Bin Locations YES
 Single Depot GRN allocation NO
 Default Depot
 GRN Price Obtained From

Stock Control Options

2.1. STOCK CONTROL – GOODS IN

AutoBatch option selected

Total Required Item
 Total Booked

No.	Quantity	Serial/Batch Number	Depot	Bin
1	10.0000	MS002043	WH1	

Press ESCAPE when finished

Multiple Batch Goods In
 Create GRNs

The following GRNs have been created. Select to edit or view

GRN No.	Serial/Batch Number	Depot	Bin	Quantity
1556	MS002043	WH1		10.0000

Press ESCAPE when finished

Multiple Batch Goods In

BlueStone Solutions for Business

Unit A, Tayside Software Centre, Technology Park, Dundee, DD2 1TY

Email: sales@bluestone-solutions.co.uk www.bluestone-solutions.co.uk

Offices in Leicester & Bristol. For all locations contact (0800) 027 3775

2.2. MOVE STOCK

Using Selective option

Item Number: F0101
 Movement Date: 07 Jun 2006
 Source Depot: WH1 Bin:
 Destination Depot: WH2 Bin:
 Quantity To Move: 2.0000
 Measured In: Each
 Keep Original GRN Date: YES

Move Stock

Batch Number	Depot Bin	In Stock	Available
MS002039	WH1	1.0000	0.0000
MS002040	WH1	1.0000	0.0000
MS002041	WH1	1.0000	0.0000
MS002042	WH1	1.0000	0.0000
MS002043	WH1	8.0000	0.0000
MS002043>001	WH2	2.0000	0.0000
MS2002	50	1000.0000	0.0000
MS2002	50	0.0000	0.0000
MS2002	80	30.0000	0.0000
MS2002	50	0.0000	0.0000
MS2002	WH1	20.0000	0.0000

Item Number: F0101 GRN No: 1557 Date Received: 07 Jun 2006
 Description: Strawberry Gateaux (Case of 6) Expiry Date:
 Cost Price: 0.0000 Best Before Date:
 Supplier: On Hold: NO

View GRNs

All batches split from the original carry a '>' suffix

2.3. SPLIT BATCH

GRN Number: 1557
 Stock Number: F0101
 Description: Strawberry Gateaux (Case)
 Old Depot: WH2
 Old Bin:
 Date: 07 Jun 2006
 New Depot: WH2
 New Bin:
 Batch Number: MS002043>002
 Qty to Split: 1.0000

Move Stock

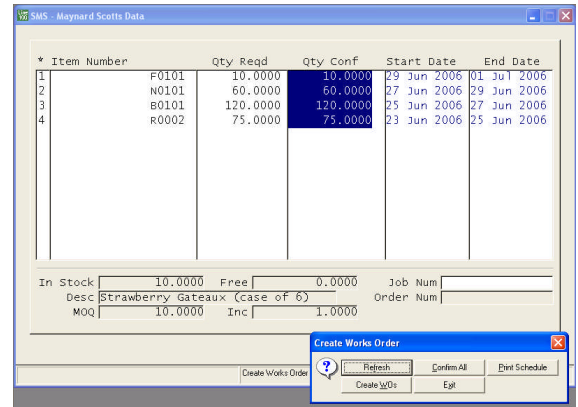
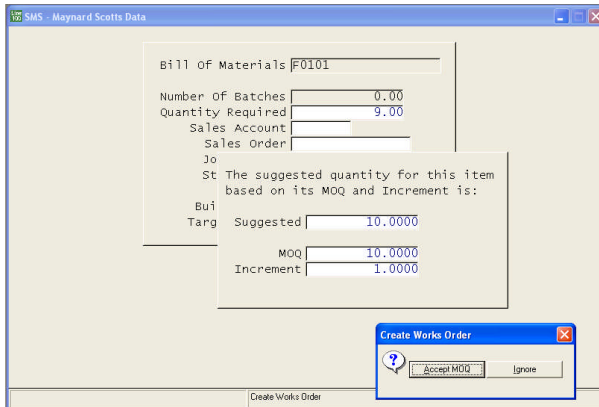
Batch Number	Depot Bin	In Stock	Available
MS002040	WH1	1.0000	0.0000
MS002041	WH1	1.0000	0.0000
MS002042	WH1	1.0000	0.0000
MS002043	WH1	8.0000	0.0000
MS002043>001	WH2	1.0000	0.0000
MS002043>002	WH2	1.0000	0.0000
MS2002	50	1000.0000	0.0000
MS2002	50	0.0000	0.0000
MS2002	80	30.0000	0.0000
MS2002	50	0.0000	0.0000
MS2002	WH1	20.0000	0.0000

Item Number: F0101 GRN No: 1558 Date Received: 07 Jun 2006
 Description: Strawberry Gateaux (Case of 6) Expiry Date:
 Cost Price: 0.0000 Best Before Date:
 Supplier: On Hold: NO

View GRNs

3. WORKS ORDERS

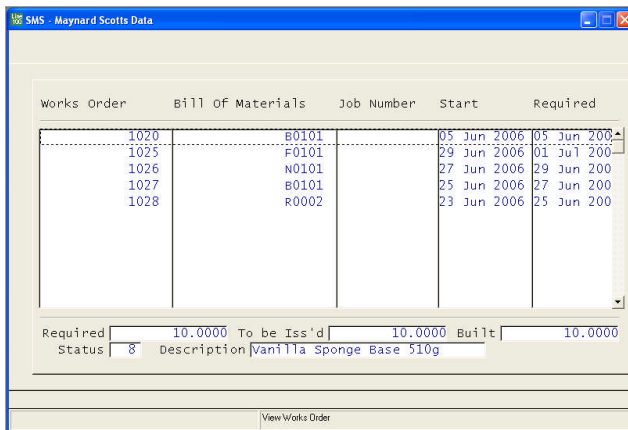
3.1 MOQ & Increment



Quantity originally requested = 9, system suggests revised quantity based on the MOQ and Increment

Actual quantity required for R0002 would be 61.2 Kg based on BOM quantities, but this has been modified by applying the MOQ and Increment

3.2 Cascaded Lead Times



Order Start Dates (orders 1025 – 1028) have been cascaded back by the Lead Time settings for the items (all set at 2 days)

APPENDIX – SERVICE PACK 1

MACH-SALES-ORDERS	Re-organised the logic for setting orders on-hold
MCN-BOM-SUB-BUILD	Added option to print component notes on the indented parts list. Included indenting functionality to make sure that component notes are indented as well
MCN-MACHINE-GROUP	Added department to the browse window when selecting a machine group
SMS-ALIGN-STOCK-FILE	Added facility to check for missing 'stock-levels records' and add them if required
SMS-COST	Program modified to use the economic-order-quantity to normalise the setup and finish costs of a BOM operation
SMS-COST-REPORT	Added field m-selling-price1 to allow this detail to be shown in the footer of the report
SMS-CREATE-WORKS-ORD	Added 'bom-parent-batch-size' to main input screen
SMS-CREATE-WORKS-ORD	Modified so that works orders for mps-items cannot be created
SMS-GRN-DISPLAY	Improved program speed
SMS-MAIN-MENU	Modified version to 10 SP1
SMS-MENU-SDC	Changed menu option 'Tracking Slips' to another menu with options of 'Time' and 'Quantity'. The 'Time' option works as before by calling sms-wo-tracking-sdc whilst the 'Quantity' option calls the new facility 'sms-sdc-tracking'
SMS-MENU-STOCK	Added new option 'Import Zero Cost GRN's' that runs new program 'sms-sc-zero-grn-val'
SMS-MRP-CALCULATE-2	Changed the way in which MPS records are dealt with. MPS now defines the actual works order quantity for each period. MRP now creates a works order for each item in each period if no works order has already been created
SMS-MRP-CALCULATE-2	Modified date range for MPS to be based on period numbers (in-line with MPS entry screen)
SMS-MRP-CALCULATE-2	Modified to use the new parameter that allows the program to exclude demand generated by works order shortages
SMS-MRP-PARAMETERS	Added new parameter to allow works order shortages (demand) to be excluded from the MRP run
SMS-MRP-PROD-SCHED	Added filter to exclude 'PW' items with 0 qty

BlueStone Solutions for Business

Unit A, Tayside Software Centre, Technology Park, Dundee, DD2 1TY

Email: sales@bluestone-solutions.co.uk www.bluestone-solutions.co.uk

Offices in Leicester & Bristol. For all locations contact (0800) 027 3775

Data Sheet for Version 10 Changes

SMS-MRP-PROD-SCHED	Added options for default build depot and default target depot to the options panel. Added software to set these depot options to the created works orders
SMS-PICKING-PRINT	Added 'm-batch-qty-of-packs' memory variable so that the number of packs within a GRN can be displayed on a PL
SMS-POP-IN	Added new option 'Semi-Auto' to 'Multi-Batch GRNs' mode that displays the GRN parameters relevant to the creating of automatic batch numbers and allows the user to edit these for this goods in session
SMS-PO-UPDATE-NL	Modified program so that it closes any record in the 'sms-po-update-nl' table that has not been matched to a nominal record after 90 days
SMS-PRINT-SHORTAGES	Added option to exclude bulk issue items from shortages printout
SMS-REORDER-REPORT	Added Product Group to the printouts
SMS-SC-BASIC-REORDER	Added new filter of 'Exclude MRP Items' that allows the user to exclude items marked as 'Include In MRP' on the item master
SMS-SC-ZERO-GRN-VAL	Program imports from grn.csv and sets all GRN's in the imported list to zero value
SMS-SDC-TRACKING	New facility - This adds a new option to the SDC Tracking Slip facility in SMS in which the tracking is based on quantity only
SMS-SO-ARCH-STATS	New program to archive sales order statistics
SMS-STOCK-STYLE	Added functionality to add the 'sms-stock-levels' record to each created stock item
SMS-TRIAL-KIT	Added 'bom-parent-batch-size' to main input screen
SMS-UT-ARCHIVE	Added new menu option 'Sales Statistics Archiving' that runs new program 'sms-so-arch-stats'
SMS-VIEW-ARRIVALS	Added serial/batch number in bottom detail box of view screen
SMS-WO-CREAT-LIBRARY	Set field 'Bom-Parent-Type' to read-only on production schedule edit screen
SMS-WO-CREAT-LIBRARY	Added display of BOM type on bottom detail box of create window. Added 'Selected BOM is a Phantom' warning screen if users selects a phantom from the browse window to confirm as a works order to be created. Added new column to schedule printout that shows if a BOM is a phantom by displaying a 'P'
SMS-WO-MANAGE-WIP	Added new option to order works orders by 'job number + works order number'
SMS-WORKS-ORD-REVIEW	Modified so that works orders for mps-items cannot be edited. These items can only be created from the MPS using MRP

BlueStone Solutions for Business

Unit A, Tayside Software Centre, Technology Park, Dundee, DD2 1TY

Email: sales@bluestone-solutions.co.uk www.bluestone-solutions.co.uk

Offices in Leicester & Bristol. For all locations contact (0800) 027 3775

APPENDIX – SERVICE PACK 2

MCN-STOCK-MAINTAIN	Added delivery address name to the sales order line view screen
SMS-COST	Added warning screen that warns user if they attempt to cost a Purchased BOM
SMS-MAIN-MENU	Modified version to 10 SP2
SMS-MENU-MAT-PLANS	Removed MPS options as MPS is now a V12 module integrated into SMS V10
SMS-MENU-PURCHASE	Changed menu option title 'PO Line Receipts' to 'Purchase Order Receipts'
SMS-MENU-STOCK	Added new option 'Slow Moving Items' to the stock reports menu that runs the new report 'sms-sc-slow-move'
SMS-PICKING-PRINT	Added new facility to print picking list in order by Stock Item Default Depot/Bin if the parameter 'Picking List Printing Sequence' is set to 'S'
SMS-PICKING-PRINT	Changed the selective mode index order on picking list number to newest first
SMS-POP-PARAMETERS	Added new option to of 'S' (Default Depot/Bin) to the 'Picking List Printing Sequence' parameter on the 'Picking Lists – Printing'" page of the SOP parameters
SMS-PRINT-RECEIPTS	New version that includes filters for supplier and order number as well as date range
SMS-PRINT-WORKS-ORD	Added two new memory variables 'm-head-stock-desc-1' and 'm-head-stock-desc-2' to allow printing of the BOM stock item description on the header
SMS-QUIK-SALES-ENTRY	Added 'FOR' (Forecast) option to sales order line type field
SMS-SC-SLOW-MOVE	New report that lists slow moving stock items. The report uses the issues database and checks the last issue for each stock item. The user is asked to input a minimum number of days since the last issue and the report filters the list on this parameter
SMS-SC-SLOW-MOVE	Added a grand total value to the report
SMS-STOCK-MOVE-DISP	Added delivery address name to the sales order line view screen
SMS-STOCK-PROFILE	Modified program to exclude the display of 'PS' items with 0 qty. This was required after modification to the MRP engine where 0 qty 'PS' records are no longer deleted
SMS-UT-DUP-GRN-REPORT	Added date field to options to allow user to filter reported duplicates by GRN date.

BlueStone Solutions for Business

Unit A, Tayside Software Centre, Technology Park, Dundee, DD2 1TY

Email: sales@bluestone-solutions.co.uk www.bluestone-solutions.co.uk

Offices in Leicester & Bristol. For all locations contact (0800) 027 3775